



**10/100/1000M Gigabit Ethernet Media Converter  
With Network Management  
Internal Power Supply FT-1000A Series**

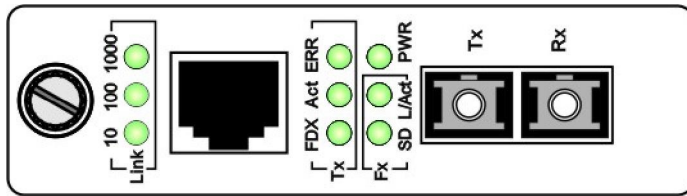
**Brief**

FT-1000A series Gigabit Ethernet Media Converter module realize the conversion from 10BASE-T, 100BASE-T, 1000BASE-TX stream to 1000BASE-SX/LX stream, Support IEEE802.1Q&ISL and backbone joint.

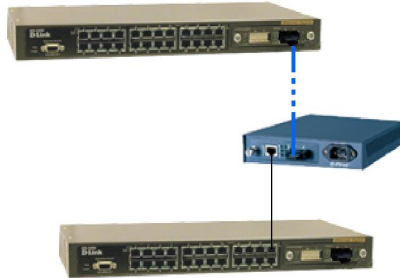
**Features:**

- | Support IEEE802.3ab 1000BASE-T 1000Mbps Gigabit Ethernet Standard.
- | Support IEEE802.3z 1000BASE-SX/LX 1000Mbps Gigabit Ethernet Standard.
- | Support IEEE802.3 10BASE - T Ethernet Standard
- | Support IEEE802.3u 100BASE - Tx Fast Etheret Standard.
- | Support IEEE 802.3x flow control.
- | Support 10Mbps , 100Mbps , 1000Mbps full rate Nway auto-negotiation
- | Support MDI/MDI-X
- | Support rate limit with step of 256Mbps/N (N=1~255,when N is 0,the copper port speed is 1000Mbps)
- | Inside 1Mbit buffer.
- | Operating temperature : 0~50
- | Storage temperature : -10~+70
- | Humidity : 10%~90% , no condensing
- | Dimension: 145mm×25mm×90mm
- | Power consumption: <6.5W

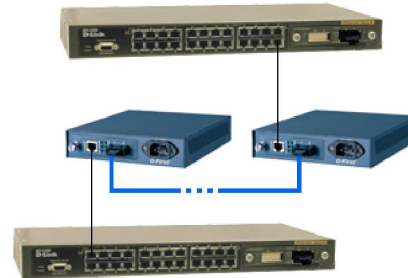
**Panel Description:**



**Equipments' Setting:**



Connecting Drawing 1



Connecting Drawing 2

**Order Information:**

Dual Fiber Products :

| Item No.          | Fiber Port | Transmitting Wavelength (nm) | Optical Power (dBm) | Receiving Sensitivity (dBm) | Optical Saturation (dBm) | Transmitting Wavelength Km | Optical Spoilage dB/Km |
|-------------------|------------|------------------------------|---------------------|-----------------------------|--------------------------|----------------------------|------------------------|
| FT-1000A/SA320MD  | DSC        | 1310                         | -9~-5               | -23                         | -3                       | 0~20                       | 0.4                    |
| FT-1000A/SA340MD  | DSC        | 1310                         | -5~-1               | -23                         | -3                       | 10~40                      | 0.4                    |
| FT-1000A/SA540MD  | DSC        | 1550                         | -3~-1               | -24                         | -3                       | 10~40                      | 0.3                    |
| FT-1000A/SA560MD  | DSC        | 1550                         | -1~3                | -26                         | -4                       | 10~60                      | 0.3                    |
| FT-1000A/SA5100MD | DSC        | 1550                         | 0~5                 | -30                         | -7                       | 20~100                     | 0.25                   |

Single Fiber Products :

| Item No.                  | Fiber Port | Transmitting Wavelength (nm) | Optical Power (dBm) | Receiving Sensitivity (dBm) | Optical Saturation (dBm) | Transmitting Wavelength Km | Optical Spoilage dB/Km |
|---------------------------|------------|------------------------------|---------------------|-----------------------------|--------------------------|----------------------------|------------------------|
| FT-1000A/SD320MD/520MD    | DSC        | 1310/1550                    | -9~-5               | -24                         | -3                       | 0~20                       | 0.4                    |
| FT-1000A/SD340MD/540MD    | DSC        | 1310/1550                    | -5~-1               | -24                         | -3                       | 10~40                      | 0.4                    |
| FT-1000A/SD360MD/560MD    | DSC        | 1310/1550                    | -1~3                | -28                         | -5                       | 10~60                      | 0.3                    |
| FT-1000A/SD3100MD /5100MD | DSC        | 1310/1550                    | 0~5                 | -30                         | -8                       | 20~100                     | 0.25                   |